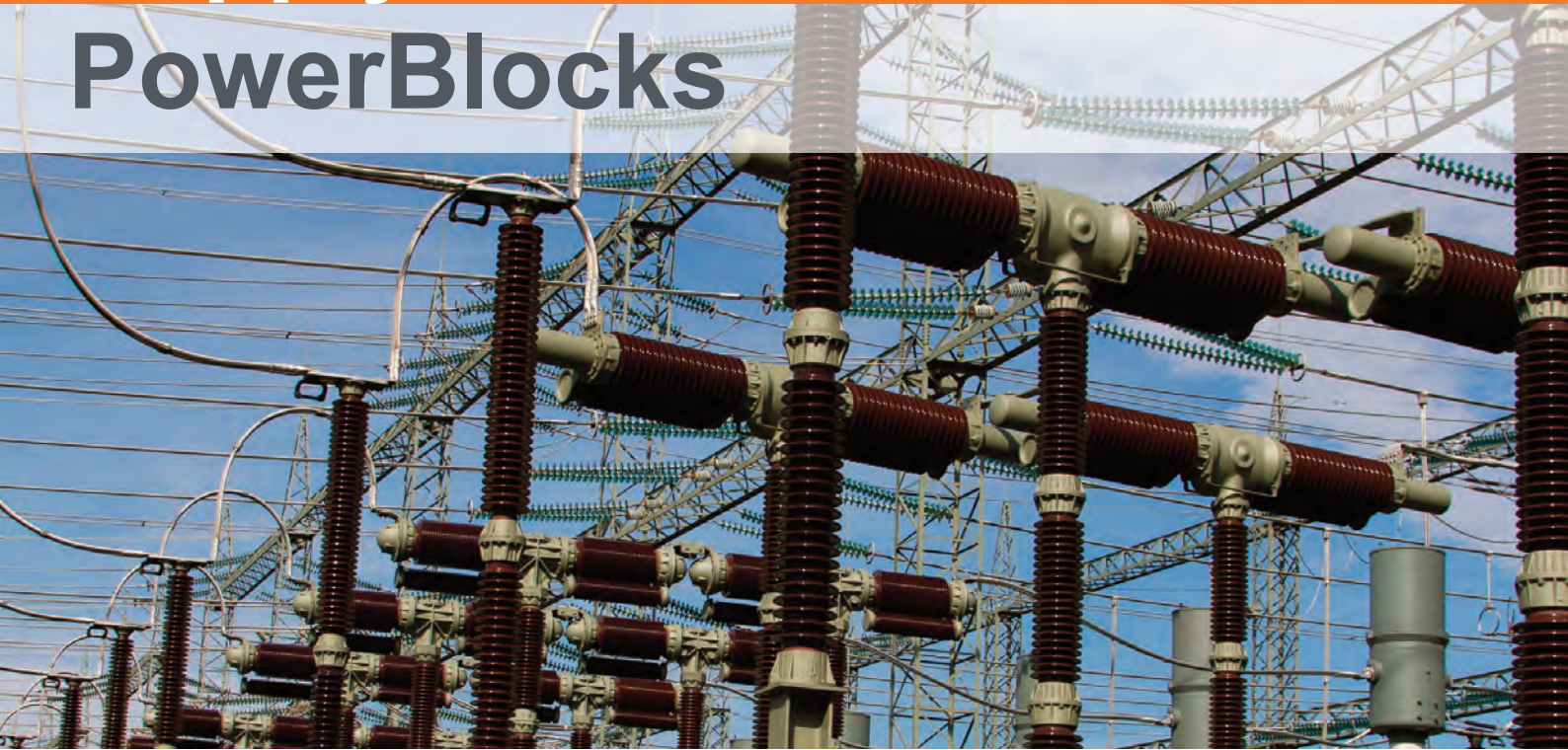


# Power Supply

by  
**MEROBEL**

# PowerBlocks



**Keep control on  
Torque & Tension**

The most comprehensive range of current regulated Power Supply units for electric brakes and clutches (EMP, hysteresis, etc.) based on microcontroller technology.

- > Accurate current output control, independent of coil temperature.
- > High protection against transients, leading to high reliability in industrial environments.
- > Free wheel and stop mode available for basic process operation.



PowerBlocks



## PowerBlock2

The universal solution, suitable to the main part of MEROBEL's EMP Brakes and Clutches range.

Max output current > **2 Amp**  
 Input voltage > **24 V AC/DC**

## PowerBlock04

Ideal for higher remote control accuracy of the smallest sizes of MEROBEL's EMP Brakes and Clutches and other Brakes technologies (i.e. Hysteresys).

Max output current > **400 mAmp**  
 Input voltage > **24 V AC/DC**

## PowerBlock4

The higher level of output current. Suitable for special coils, for the use of several devices plugged in parallel mode, or other Brakes technologies (i.e. Hysteresys).

Max output current > **4 Amp**  
 Input voltage > **24 → 30 DC**

## Principle

