

DRP SIZE 1



DRP1

Weight

Efficiency

Backlash

Color

Tooth type

Module

Helix angle (left)

Number of teeth

Pressure angle

Theoretical pitch diameter

Addendum modification factor

Pinion quality grade

Surface hardness

Ratio

Nominal feed force

Peak acceleration feed force

Max. acceleration feed force

E-stop force

Max. linear speed

Nominal linear speed

Linear stiffness on the rack

Inertia

Ratio

Nominal output torque

Max. output torque

No load torque

No load torque

E-stop torque

Max. input speed

Nominal input speed

Radial stiffness

Axial stiffness

Torsional stiffness

General data

| | | | M | R |
|----------|--------|----------|----------|----------|
| m | kg | 1 Stage | | |
| | | 2 Stages | 109 | 115 |
| η | % | 1 Stage | | |
| | | 2 Stages | 93 | 91 |
| J | arcmin | Standard | 3 | 4 |
| | | Reduced | 1 | 2 |
| | | | RAL2012 | |

Pinion features

| | | Helical | Straight |
|------------|------------|----------------|-----------------|
| Mo | mm | 3 | 3 |
| β | deg | 19°31'42" | 0° |
| Z2 | - | 18 | 19 |
| α | deg | 20 | 20 |
| D02 | mm | 57,3 | 57 |
| x0 | - | 0,118 | 0,167 |
| Q | (ISO 1328) | 6 | 6 |
| HRC | HRC | 61-63 | 61-63 |

Rack features

| Version | | | Helical | Straight |
|------------------|-----------------|----|----------------------|-----------------|
| Standard | F2B | N | 15939 | 13766 |
| | F2NOT | N | 31878 | 23940 |
| | Material | | C45E DIN 1.1191 | |
| Reinforced | F2B | N | 19562 | N/A |
| | F2NOT | N | 48904 | N/A |
| | Material | | 16MnCr5 | |
| Available length | L | mm | 500, 1000, 2000 | |
| Dimensions | | | see details p113-115 | |

Drive linear features

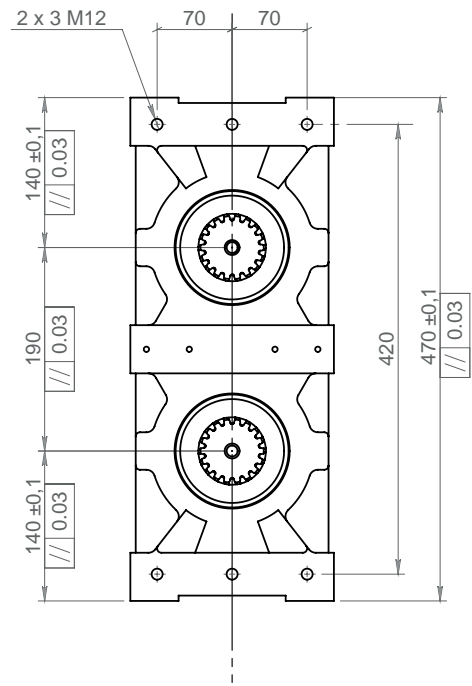
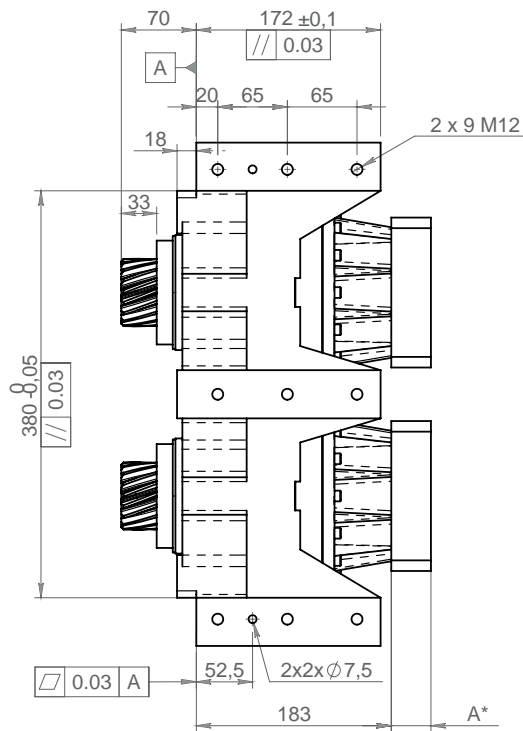
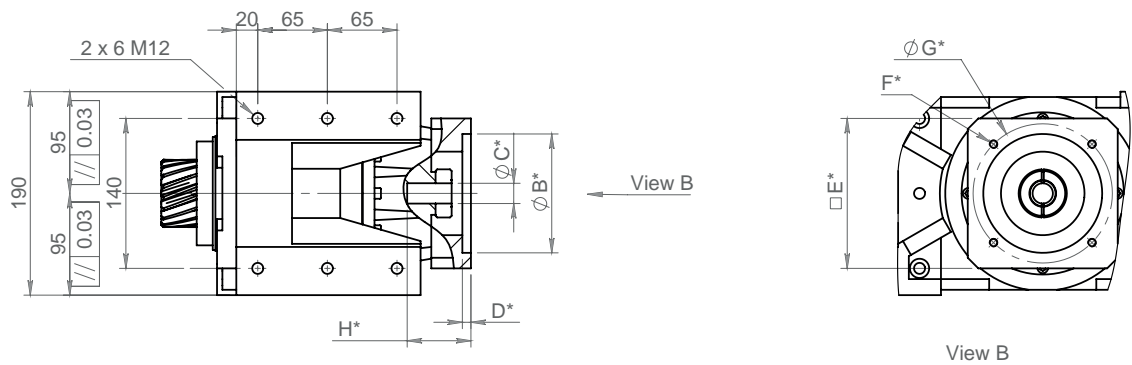
| | | 5 | 7 | 10 | 17 | 21 | 31 | 46 | 61 | 91 |
|----------------|--------------------|----------|----------|-----------|-----------|-----------|-----------|-----------|-----------|-----------|
| F2N | N | | | | 13613 | 10646 | 15009 | 9424 | 13089 | 9424 |
| F2B | N | | | | 23839 | 18639 | 26283 | 16510 | 22897 | 16510 |
| F2B_max | N | | | | 47679 | 37277 | 52565 | 33019 | 45794 | 33019 |
| F2NOT | N | | | | 29075 | 29075 | 29075 | 29075 | 29075 | 29075 |
| V2B | m/min | | | | 64 | 51 | 35 | 23 | 18 | 12 |
| V2N | m/min | | | | 28 | 22 | 15 | 10 | 8 | 5 |
| K2T +M | N/μm | | | | 190 | 190 | 178 | 170 | 173 | 185 |
| K2T +R | N/μm | | | | | 169 | 176 | 169 | 173 | 185 |
| I +M | kg.mm ² | | | | 287 | 269 | 259 | 254 | 246 | 245 |
| I +R | kg.mm ² | | | | | 458 | 448 | 443 | 435 | 433 |

DRP ratings

| | | 5 | 7 | 10 | 17 | 21 | 31 | 46 | 61 | 91 |
|---------------|-----------|----------|----------|-----------|-----------|-----------|-----------|-----------|-----------|-----------|
| T2N | Nm | | | | 390 | 305 | 430 | 270 | 375 | 270 |
| T2B | Nm | | | | 683 | 534 | 753 | 473 | 656 | 473 |
| T01 +R | Nm | | | | | 1,5 | 1,5 | 1,5 | 1,5 | 1,5 |
| T01 +M | Nm | | | | 1 | 1 | 1 | 1 | 1 | 1 |
| T2NOT | Nm | | | | 833 | 833 | 833 | 833 | 833 | 833 |
| n1B | rpm | | | | 6000 | 6000 | 6000 | 6000 | 6000 | 6000 |
| n1N | rpm | | | | 2600 | 2600 | 2600 | 2600 | 2600 | 2600 |
| K2R | N/μm | | | | 480 | 480 | 480 | 480 | 480 | 480 |
| K2A | N/μm | | | | 1710 | 1710 | 1710 | 1710 | 1710 | 1710 |
| C2t +R | Nm/ rad | | | | 237205 | 254393 | 237205 | 247518 | 278457 | |
| | Nm/arcmin | | | | 69 | 74 | 69 | 72 | 81 | |
| C2t +M | Nm/ rad | | | | 292208 | 292208 | 261269 | 240642 | 247518 | 278457 |
| | Nm/arcmin | | | | 85 | 85 | 76 | 70 | 72 | 81 |

Dimensions and main data for information only - Please consult us and / or refer to Products Datasheets
For accurate selection, contact your local supplier

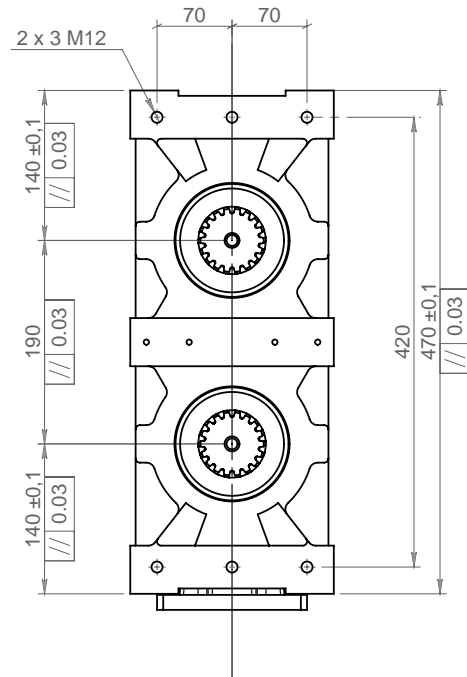
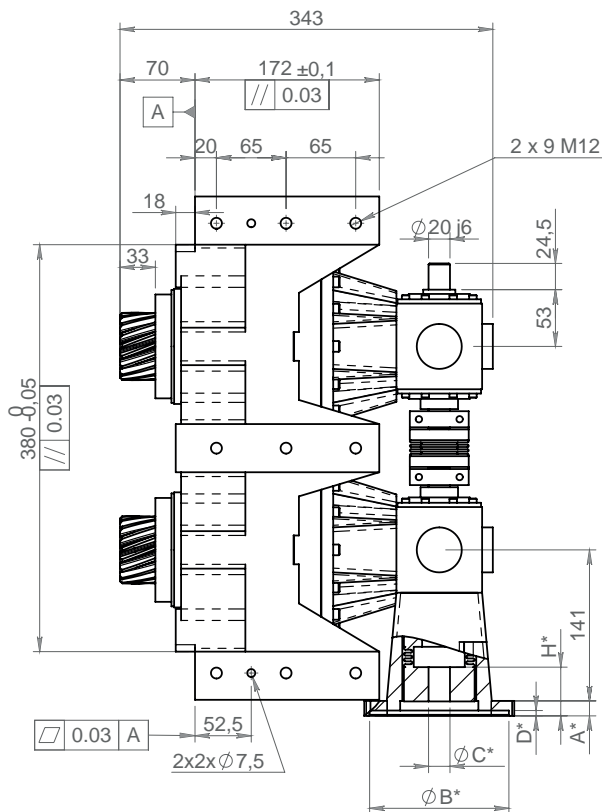
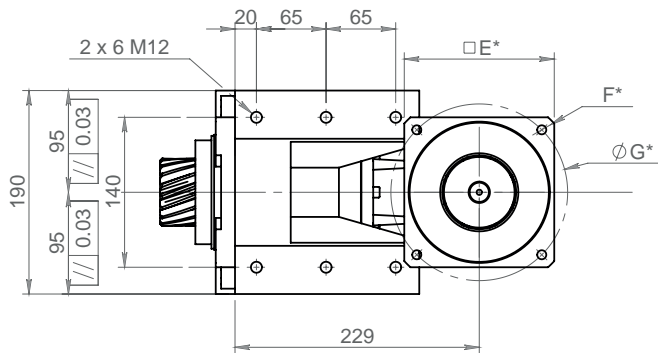
DIMENSIONS - TYPE M



| | IFA 100 11/19 | IFA 140 11/19 | IFA 140 22/32 | IFA200 22/32 |
|----------|---------------|---------------|---------------|--------------|
| A | 27 | 27 | 37 | 42 |
| E | 100 | 140 | 140 | 200 |
| H | 49 | 49 | 59 | 64 |

*B C D F G According to motor dimensions
Tapping depth = 1.5x0 thread

DIMENSIONS - TYPE R



| | MF1 100 | MF1 140 | MF1 200 |
|----------|---------|---------|---------|
| A | 14 | 14 | 18 |
| E | 100 | 140 | 200 |
| H | 62 | 62 | 66 |

*B C D F G According to motor dimensions
Tapping depth = 1.5x0 thread

Dimensions and main data for information only - Please consult us and / or refer to Products Datasheets
For accurate selection, contact your local supplier